



**MEGA**  
PACKAGING CORPORATION

COMPANY NAME	: MEGA PACKAGING CORPORATION
ADDRESS	: AIR STRIP ROAD, CANLUBANG INDUSTRIAL ESTATE CALAMBA, LAGUNA, PHILIPPINES
DATE ESTABLISHED	: JUNE 1994
PLANT SIZE	: 50,000 SQUARE METERS (5 HECTARES)
PLANT CAPACITY MONTH	: 1000 METRIC TONS OF MOULDED FOAMED PRODUCTS PER
NUMBER OF EMPLOYEES	: 600 EMPLOYEES
WORK SCHEDULE	: 2 SHIFTS PER DAY (12 HOURS PER SHIFT), MONDAY TO FRIDAY (SATURDAYS AND SUNDAYS ARE FOR PREVENTIVE MAINTENANCE)

**“MEGA PACKAGING CORPORATION, with its ‘VISION 2020 STRATEGY,’ aims to achieve WORLD-CLASS status as a quality manufacturer of packaging materials with quality products, cost-efficient goods, and excellent delivery service by 2020.”**

**“MEGA PACKAGING CORPORATION**, through its **VISION 2020 STRATEGY**,’ is committed to the continuous improvement of its products, facilities, capabilities, and processes, and holds the following corporate mission statements by 2020:

**To the Customer:** Providing Total Customer Satisfaction by responding with flexibility to customer needs and global requirements.

**To Quality:** Continuous development, implementation, and improvement of a globally accepted Quality System for the company.

**To the Employees:** Development and the continuous improvement on the technological and professional capability of our employees in manufacturing world-class quality EPS Packaging Products.

**To Safety:** Total Safety Awareness, continuous improvement of Safety Strategies, and promoting Safety Habits as a way of life.

**To the Industry:** Maintenance of adequate representation as the country’s leading Expandable Polystyrene manufacturing company.

**To the Community:** Extension of the company’s corporate responsibility to adjacent community through services it can present and provide in relation to available technology.

**To the Nation:** Contribution to the growth and development program of the nation by providing employment and revenue through reasonable wages and dues.

WE CATER TO THE FOLLOWING INDUSTRIES:

- ✓ ELECTRONICS
- ✓ SEMICONDUCTOR
- ✓ APPLIANCES
- ✓ CONSTRUCTION
- ✓ AGRICULTURE / AQUACULTURE
- ✓ AUTOMOTIVE
- ✓ AEROSPACE
- ✓ FURNITURE

## TYPES OF MATERIALS USED

**LOW END:**

a) EXPANDABLE POLY STYRENE (EPS)

- \* F-TYPE : Fire retardant grade
- \* P-TYPE : Ordinary grade
- \* Antistatic

**MEDIUM END:**

a) HIGH IMPACT POLY STYRENE (HIPS)

b) CO-POLYMER (65% EPE, 35% EPS-HYBRID)

**HIGH END**

a) EXPANDABLE POLYETHYLENE (EPE)

b) EXPANDABLE POLYPROPYLENE (EPP)

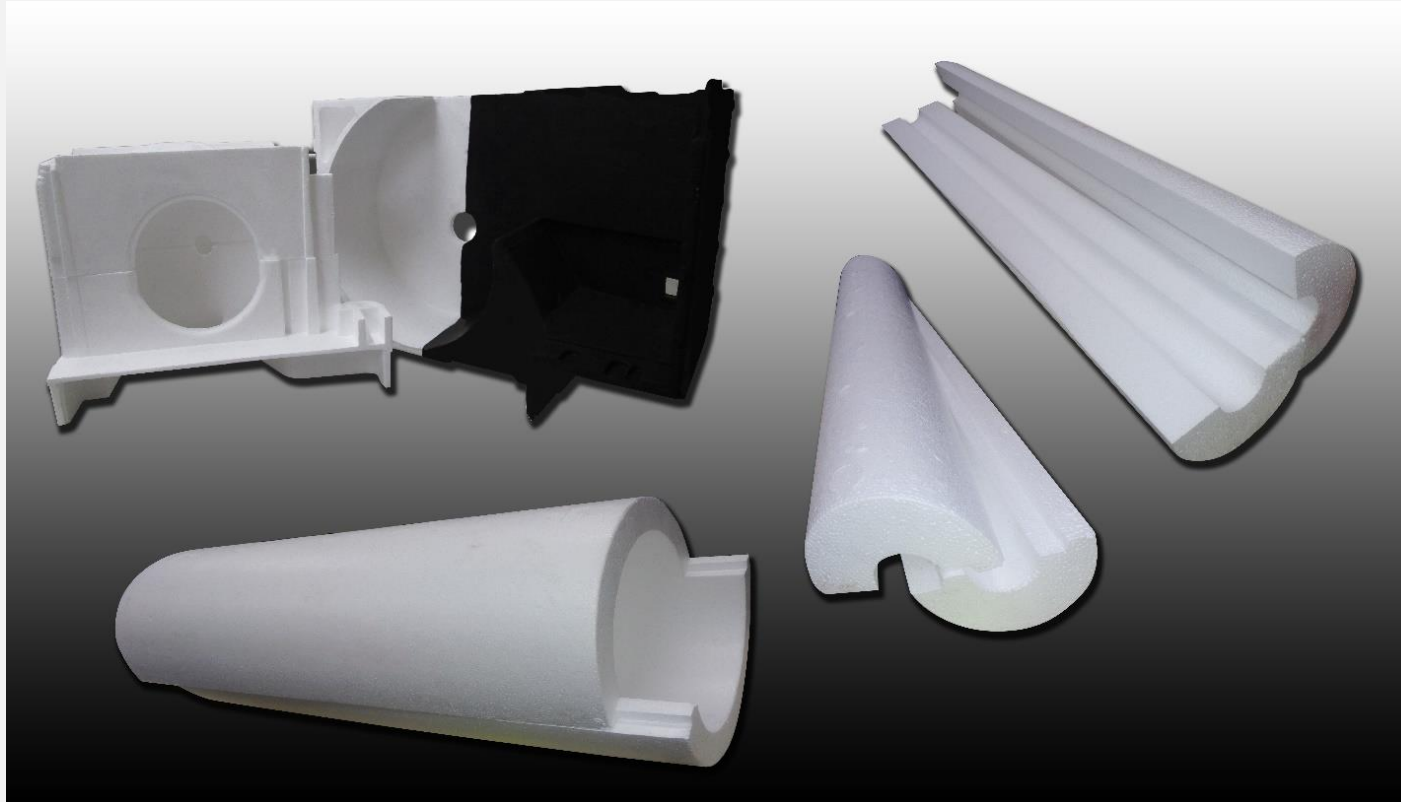


## A. MOULDED EXPANDABLE POLYSTYRENE (P-TYPE)

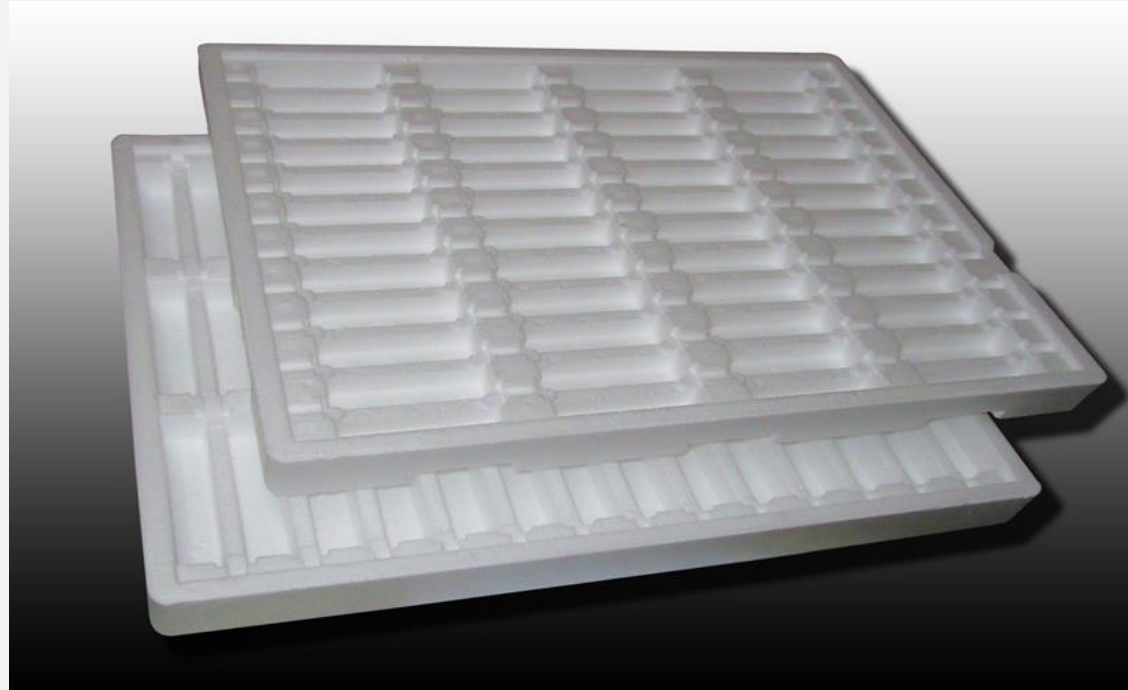


Regular packaging for electronic & electrical appliances, furniture, toys, ceramics and pharmaceutical containers.

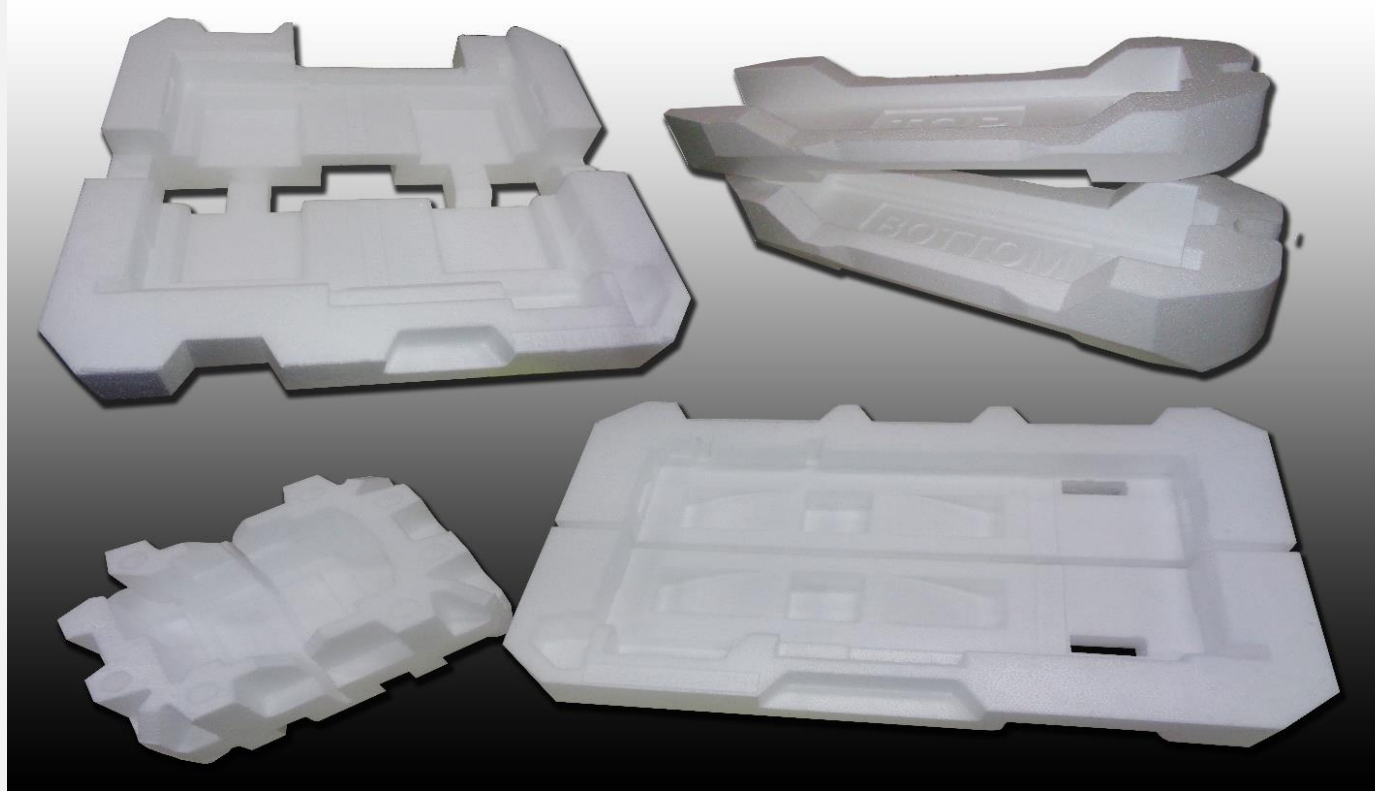
## A. MOULDED EXPANDABLE POLYSTYRENE (F-TYPE)



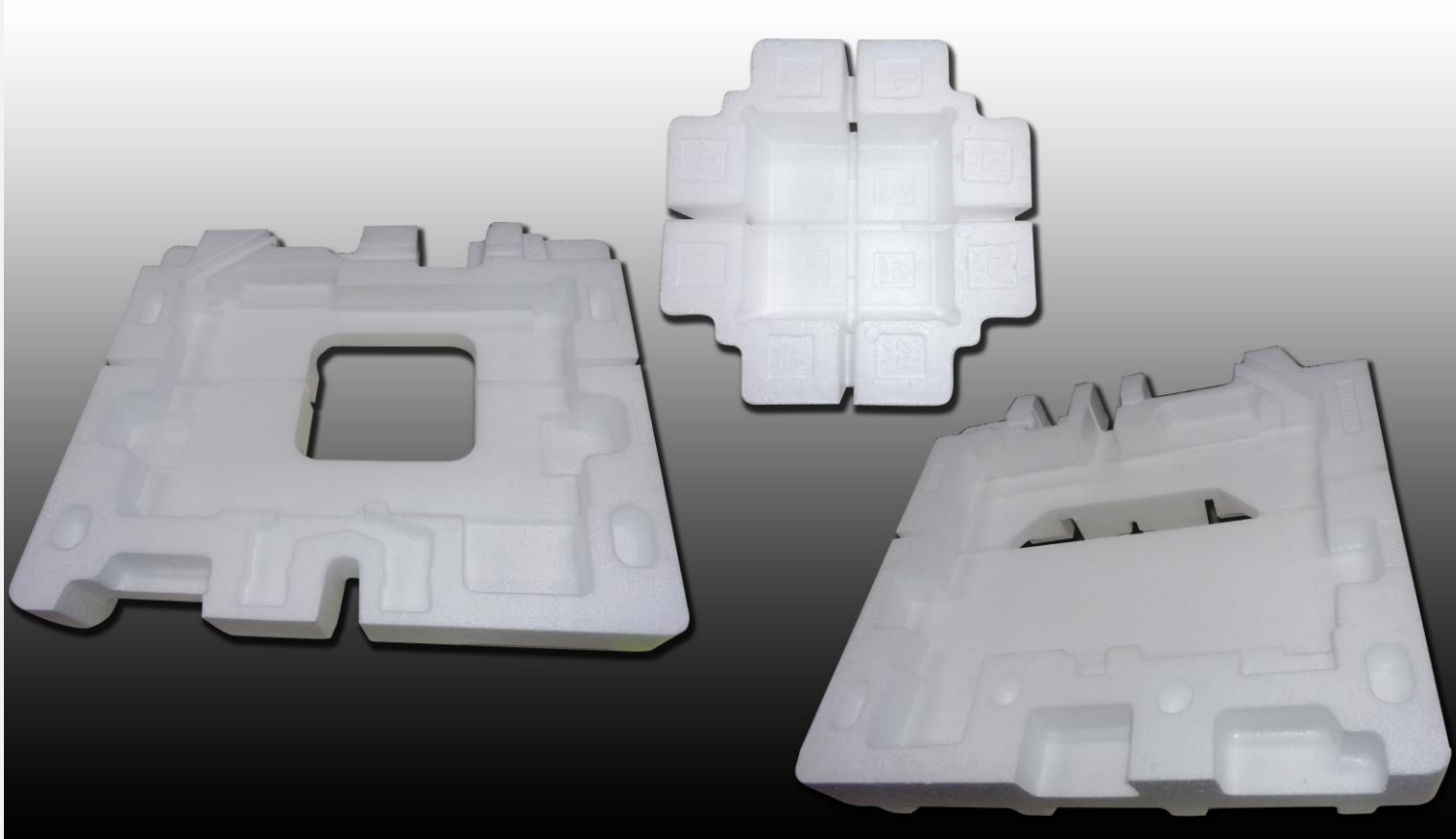
Fire Retardant Grade EPS - For appliance parts, insulation pipes & boards for construction use.

**B. MOULDED ANTISTATIC EPS**

Antistatic EPS -- Used for packaging of static sensitive devices.

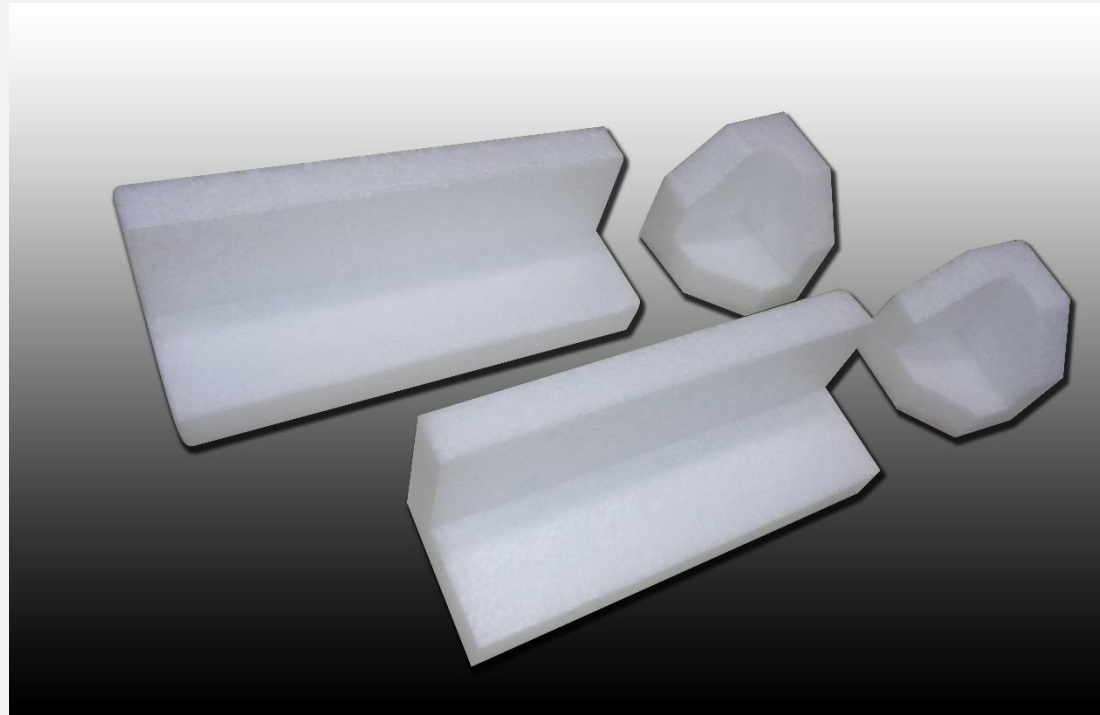
**B. MOULDED HIPS**

High-Impact Polystyrene (HIPS) - A more resilient type of EPS used for packaging of high-end products. The material contains rubber to make the moulded product tougher and harder to disintegrate during impact.

**B. MOULDED CO-POLYMER**

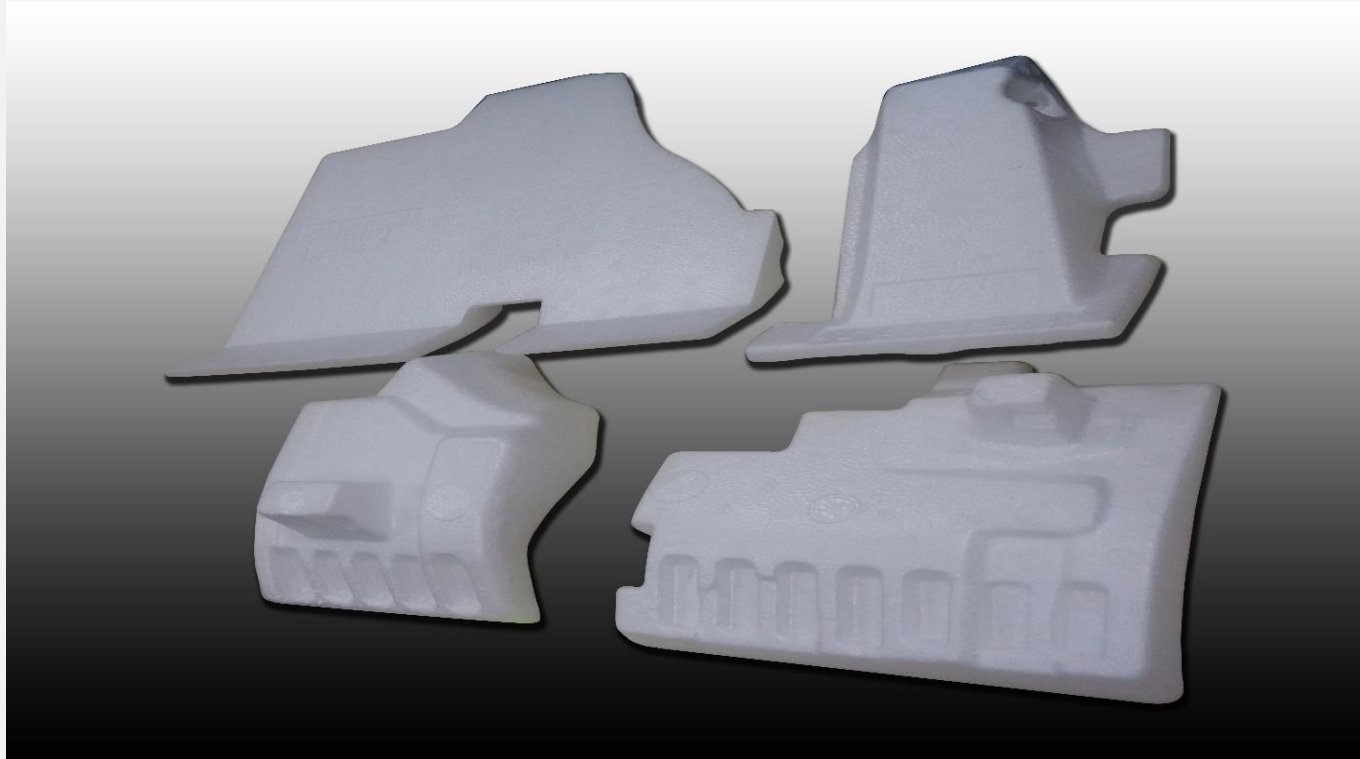
Hybrid material compost of 65% EPS and 35% EPE. This material is is used for packaging of electronic products that requires a high shock absorption.

## D. MOULDED EXPADABLE POLYETHYLENE (EPE)



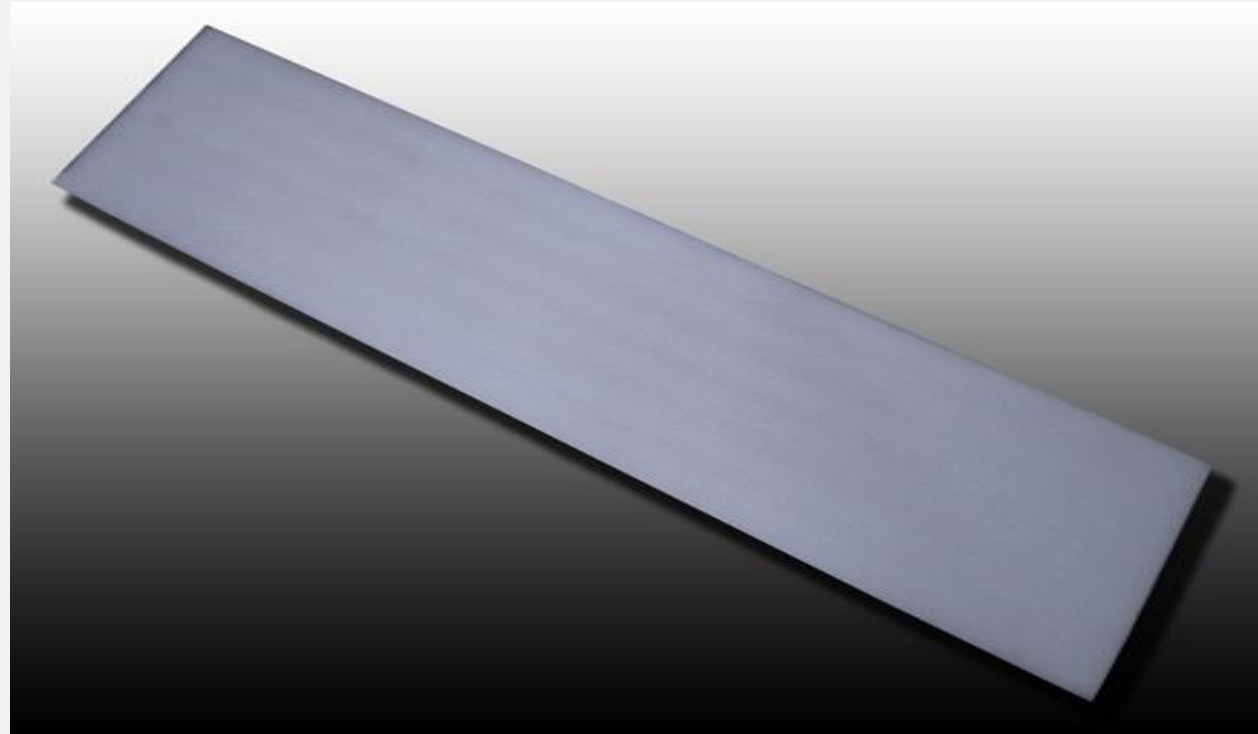
Expandable Polyethylene (EPE) - A high-end material used for the packaging of light (low-weight) but shock sensitive parts and products.

## D. MOULDED EXPANDABLE POLYPROPYLENE (EPP),



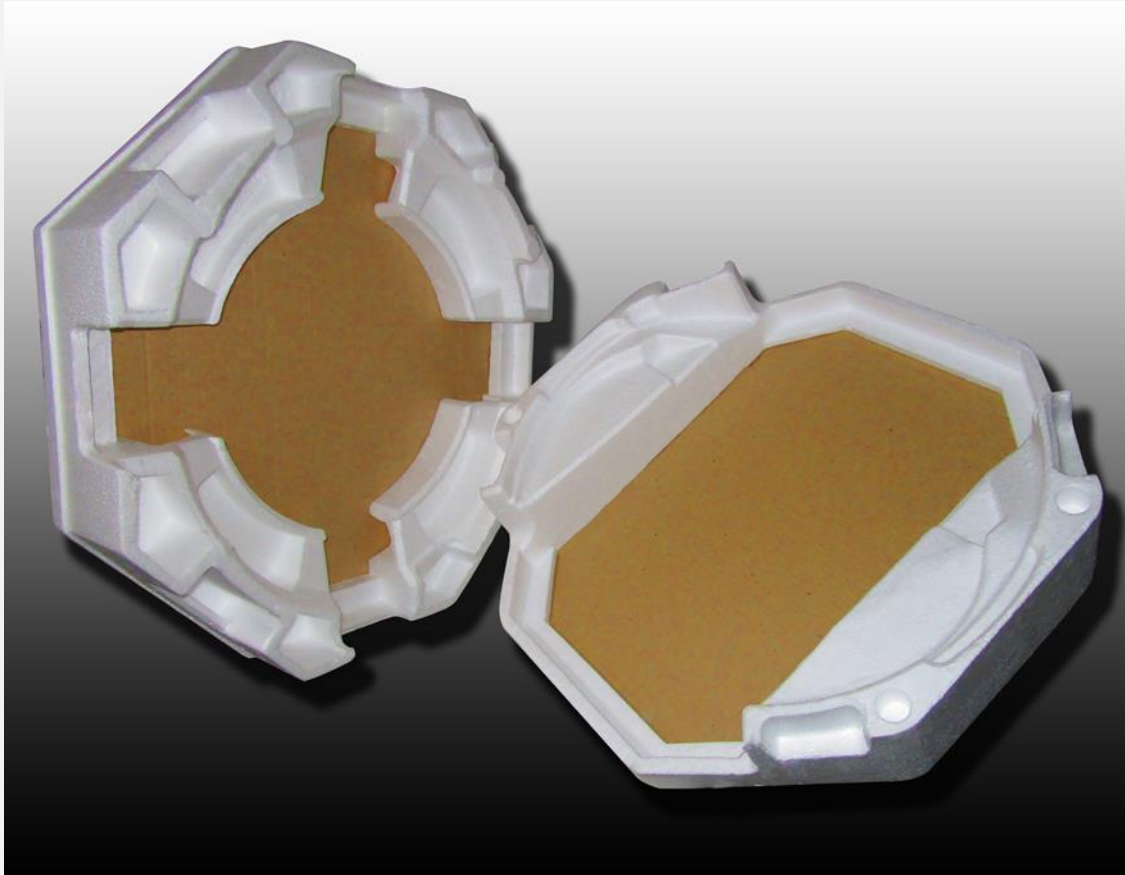
Expandable Polypropylene (EPP) -- A high-end material used for the packaging of heavier but shock sensitive parts. It is also the preferred material used by car parts and aircraft parts manufacturer.

## D. LAMINATED POLYETHYLENE



Laminated Polyethylene -- A high-end material used for the packaging of light (low-weight) but shock sensitive parts and products.

## E. ASSEMBLED PACKAGING SETS



Combination of carton boards and moulded products



Ready to use packaging assemblies